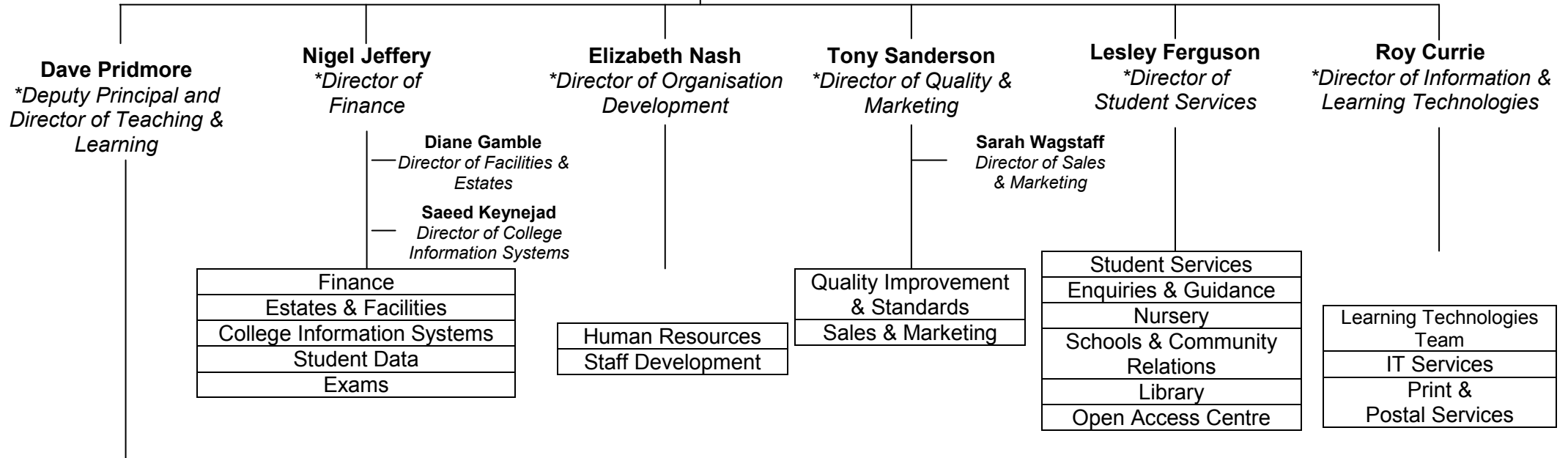


Ian Pryce
**Principal & Chief Executive*

Ingrid Lennox
**Clerk to the Corporation*



<u>Teaching & Learning Directorate</u>	<u>Responsibilities</u>
Sue Blackman Director of Centre for the Arts	Art & Design and Media, Hair, Beauty & Holistic Therapies, Performing Arts
John Hobbs Director of Sixth Form & University Centre	AS/A2, GCSEs, Access to HE, Teacher Training, Higher Education, Languages
Christine Inglis Director of Foundation & Community Learning	Basic Skills, Additional Support, Learning Shops, EFL, ESOL, 14+ Centre
Tom Kay Director of Centre for Professional & People Services	Business Management (CoVE), Care (CoVE), Childcare & Counselling, Sport, Leisure & Travel, Hospitality
Warren Edwards Director of Centre for Technology	Computing, Engineering, Motor Vehicle Centre, Skills for Energy (CoVE), Aerospace
Warren Edwards Director of Centre for Construction	Painting & Decorating, Bricklaying, Carpentry, Plumbing CoVE, Electrical Installation, House Building for the future CoVE
Sharon Chinneck Director of Enterprise	Enterprise, Bedford College Apprenticeships, Train to Gain
Esin Esat Director of Sustainability	Sustainability & Skills for Energy
Pat Crowe Centre Administrator Team Leader	Senior Centre Administrators and Centre Administrators

* Member of College Executive Team