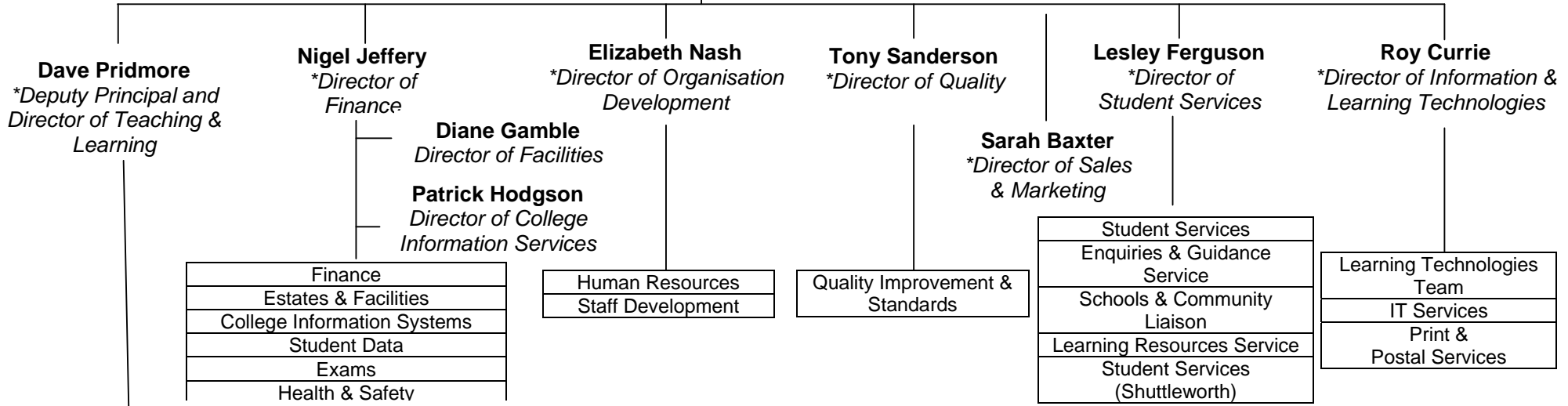


**Ian Pryce**  
*\*Principal & Chief Executive*

**Ellen Heaney**  
 Clerk to the Corporation



<b>Teaching &amp; Learning Directorate</b>	<b>Responsibilities</b>
<b>Sue Blackman</b> *Directorate for Arts & Sixth Form	Art & Design and Media, Hair, Beauty & Holistic Therapies, Performing Arts, Music Tech A Levels, GCSEs, Access to HE, Hospitality
<b>Sharon Chinneck</b> *Directorate for Enterprise & Technology	Enterprise, Bedford College Apprenticeships, Train to Gain, Learning Centres Computing, Engineering, Motor Vehicle Centre, Aerospace Painting & Decorating, Brickwork, Carpentry, Plumbing, Electrical Installation
<b>Tom Kay</b> *Directorate for Professional & People Services	Business Management, Care, Childcare & Counselling, Sport, Public Services & Outdoor Ed Teacher Ed, Higher Education Co-ordinator Foundation Education, Basic Skills, Additional Support, ELT
<b>Mike Johnston</b> *Directorate for Land Based Services	Animal Sciences, Land and Environment
<b>Esin Esat</b> Director of Sustainability	Sustainability
<b>Christine Inglis</b> <b>John Hobbs</b> <b>Hugh Rea</b> <b>Gail Cocozza</b> Senior Managers	Teaching & Learning Cross College Projects Teaching & Learning Cross College Projects Teaching & Learning Cross College Projects 14-16

\* Member of College Executive Team

